

**Locality Map**

- Legend**
- Barriers
  - FENCE
  - Eastern Cape Province
  - Joe Gqabi - District Municipality
  - Elundini - Local Municipality
  - Wards no - 16 / 17
  - Mount Fletcher and Maclear - Administrative regions
  - Farm portions
  - Mining Area

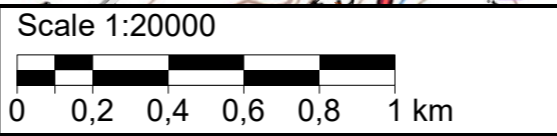
- Proposed mining area coordinates:**
- A -30,945797°S; 28,441596°E
  - B -30,945433°S; 28,441785°E
  - C -30,945211°S; 28,441846°E
  - D -30,94517°S; 28,441877°E
  - E -30,944871°S; 28,44202°E
  - F -30,944585°S; 28,442245°E
  - G -30,944411°S; 28,442483°E
  - H -30,944341°S; 28,442868°E
  - I -30,944325°S; 28,443128°E
  - J -30,944369°S; 28,443542°E
  - K -30,944391°S; 28,444187°E
  - L -30,944436°S; 28,44436°E
  - M -30,944552°S; 28,44469°E
  - N -30,944549°S; 28,444743°E
  - P -30,944598°S; 28,4449°E
  - Q -30,944662°S; 28,445028°E
  - R -30,945083°S; 28,445571°E
  - S -30,945232°S; 28,445889°E
  - T -30,945263°S; 28,44601°E
  - U -30,94553°S; 28,446471°E
  - V -30,94571°S; 28,446375°E
  - W -30,945701°S; 28,446259°E
  - X -30,945599°S; 28,446094°E
  - Y -30,945506°S; 28,44597°E
  - Z -30,945316°S; 28,445742°E
  - aa -30,944972°S; 28,445224°E
  - bb -30,944754°S; 28,444933°E
  - cc -30,944612°S; 28,444563°E
  - dd -30,944512°S; 28,444239°E
  - ee -30,944514°S; 28,443828°E
  - ff -30,944603°S; 28,443213°E
  - gg -30,944675°S; 28,442726°E
  - hh -30,944818°S; 28,442408°E
  - ii -30,945188°S; 28,442094°E
  - jj -30,945872°S; 28,441728°E
  - kk -30,945832°S; 28,44166°E

- A 30°56'44,869"S; 28°26'29,746"E
- kk 30°56'44,995"S; 28°26'29,976"E
- jj 30°56'45,139"S; 28°26'30,221"E
- ii 30°56'42,677"S; 28°26'31,538"E
- hh 30°56'41,345"S; 28°26'32,669"E
- gg 30°56'40,83"S; 28°26'33,814"E
- ff 30°56'40,571"S; 28°26'35,567"E
- ee 30°56'40,25"S; 28°26'37,781"E
- dd 30°56'40,243"S; 28°26'39,26"E
- cc 30°56'40,603"S; 28°26'40,427"E
- bb 30°56'41,114"S; 28°26'41,759"E
- aa 30°56'41,899"S; 28°26'42,806"E
- Z 30°56'43,138"S; 28°26'44,671"E
- Y 30°56'43,822"S; 28°26'45,492"E
- X 30°56'44,156"S; 28°26'45,938"E
- W 30°56'44,524"S; 28°26'46,532"E
- V 30°56'44,556"S; 28°26'46,95"E
- U 30°56'43,908"S; 28°26'47,296"E
- T 30°56'42,947"S; 28°26'45,636"E
- S 30°56'42,835"S; 28°26'45,2"E
- R 30°56'42,299"S; 28°26'44,056"E
- Q 30°56'40,783"S; 28°26'42,101"E
- P 30°56'40,553"S; 28°26'41,64"E
- N 30°56'40,376"S; 28°26'41,075"E
- M 30°56'40,387"S; 28°26'40,884"E
- L 30°56'39,97"S; 28°26'39,696"E
- K 30°56'39,808"S; 28°26'39,073"E
- J 30°56'39,728"S; 28°26'36,751"E
- I 30°56'39,57"S; 28°26'35,261"E
- H 30°56'39,628"S; 28°26'34,325"E
- G 30°56'39,88"S; 28°26'32,939"E
- F 30°56'40,506"S; 28°26'32,082"E
- E 30°56'41,536"S; 28°26'31,272"E
- D 30°56'42,612"S; 28°26'30,757"E
- C 30°56'42,76"S; 28°26'30,646"E
- B 30°56'43,559"S; 28°26'30,426"E
- A 30°56'44,869"S; 28°26'29,746"E

Mining permit application area:  
1.16 ha

Client:  
World Focus 1143 CC  
Reg no:2006/045378/23

Consultant:



**T3028CD**